



Models of Support for Students with Diverse Abilities

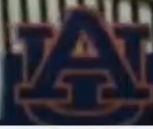
Academic and Student Affairs Committee

Academic and Student Affairs

January 2025



Action Hudl
Trackchair



#4 AUBURN

3



#7 SMSU

0

1ST 18:05



16

00:16 / 00:54

Introduction to Wheelchair Basketball

- **What is Wheelchair Basketball?**
 - Adapted version of traditional basketball for athletes with physical disabilities.
 - Governed by the International Wheelchair Basketball Federation (IWBF) and National Wheelchair Basketball Association (NWBA).
- **Origins:**
 - Developed in the 1940s to rehabilitate injured World War II veterans.
- **Global Reach:**
 - Played in over 100 countries with a growing number of collegiate, professional, and Paralympic teams.

SMSU Wheelchair Basketball Program

- **Program Highlights:**
 - Established in 1969 as part of SMSU's commitment to inclusivity.
 - Multiple national championships and a history of excellence.
- **Support for Students with Diverse Abilities:**
 - Scholarships and academic resources tailored for student-athletes.
 - A robust mentorship program focusing on personal and professional growth.
- **Community Impact:**
 - Hosting inclusive camps and programs for youth and prospective athletes.

Benefits and Opportunities

- **Inclusive Education and Athletics:**
 - Enhances physical and mental well-being.
 - Builds leadership, resilience, and teamwork.
- **Diverse Career Pathways:**
 - Collegiate scholarships, professional leagues, coaching, and advocacy roles.
- **Community Engagement:**
 - Promotes inclusivity and raises awareness for adaptive sports.

Call to Action for Minnesota State

- **Enhance Support Systems:**
 - Expand scholarships and financial resources for student-athletes with disabilities.
- **Promote Inclusive Programs:**
 - Encourage replication of SMSU's model across Minnesota State institutions.
- **Advocate for Adaptive Sports:**
 - Collaborate with local communities to host events and foster inclusivity.
- **Engage Stakeholders:**
 - Partner with alumni, donors, and organizations to strengthen programs.

Uniquely Abled Academy at SCC

Dr. Annette Parker, President
South Central College (SCC)

- » Why was it important to bring the Uniquely Abled Academy (UAA) to SCC?
- » Why were you personally invested in this project?
- » How has UAA impacted SCC overall?



Impact on Community

Alyssa Klein, Youth Services Coordinator
Minnesota Department of Employment
and Economic Development (DEED),
Vocational Rehabilitation Services (VRS)

- » How have you seen UAA impact students?
- » Why are programs like UAA important to our communities?



Impact on SCC Instruction

Jon Morgan, Faculty
SCC Machine Tool Technology (MTT)

- » UAA Faculty Lead
- » What impact has UAA had on you personally? How you teach?
- » Why are program like UAA important for industry?



Impact on SCC Students

Gus Lennartson, 2022 UAA Graduate
Current SCC MTT Student

- » Lab Assistant and Mentor for UAA-CNC 2024
- » What impact has UAA had on your career and education?
- » Why would you recommend schools have UAA as an option?



SCC UAA Student Outcomes

» Kristin Underwood, Director of Customized Workforce Education

Year	Applicants	Accepted	Persisted	Length of Program	Cost/Student	Outcomes
2024	11	7	TBD	10 Weeks (8 CNC/2 Skills)	\$6750.00	TBD
2023	7	6	5	10 Weeks (8 CNC/2 Skills)	\$9750.00	<ul style="list-style-type: none"> • 2 employed FT • 1 attended college • 1 went back to HS • 1 in unrelated employment, seeking related • 1 getting driver's license
2022	18	12	9	12 weeks (10 CNC/2 Skills)	\$8900.00	<ul style="list-style-type: none"> • 1 employed FT • 1 continued employment • 2 attended SCC • 5 unknown outcomes